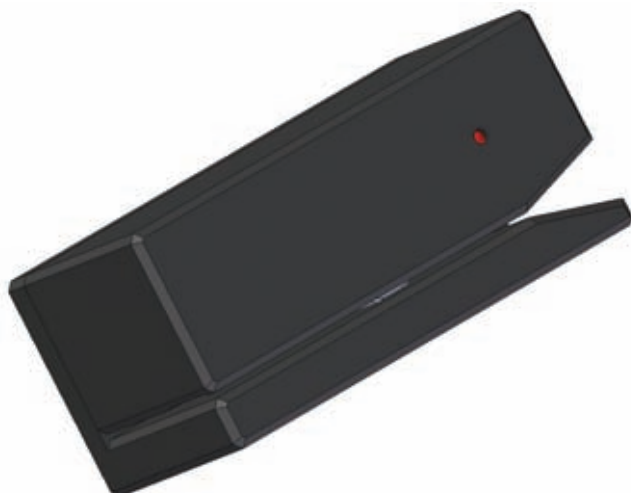




MCR - ELM SERIES Magnetic card reader



MAIN FEATURES

- Manual insertion type (Swipe)
- Alloy machined framework
- 1-2-3 or central track unidirectional reader
- One pass reading accuracy
- Cutter blades with keen self-sharpening
- Bicolor led status indicator
- Conforming to Standard ISO 7810, 7813
- Microprocessor based electronics
- SMD low consumption electronic circuits
- Communication by means of TTL / RS232 serial interface

TECHNICAL SPECIFICATIONS

OVERALL DESCRIPTION

- **Outline dimensions** : 43(H) x 100(L) x 42(W) mm
- **Weight** : 300 gr. (Approximately)
- **Electronics** : Motorola uPC + Reader ICs
- **Output interface** : TTL / RS232
- **Power requirements** : +5V DC +/-5% 100mA

RELIABILITY

- **Head Life** : More than 300,000 Passes
- **Electronic Circuit** : 50,000 Hours
- **Error Rate** : Less than 5×10^{-3}

BASIC PERFORMANCE

- **Card Feed Speed** : 8 to 150 cm/s
- **Reading Track Capabilities** : ISO 1-2-3 / central track
- **Recording Method** : Two-frequency coherent phase (F2F)
- **Number of heads** : 1

ENVIRONMENTAL

- **Operating temperature** : From -10 to +55°C
- **Storage temperature** : From -30 to +70°C
- **Relative humidity** : From 10 to 90%
(No condensation)